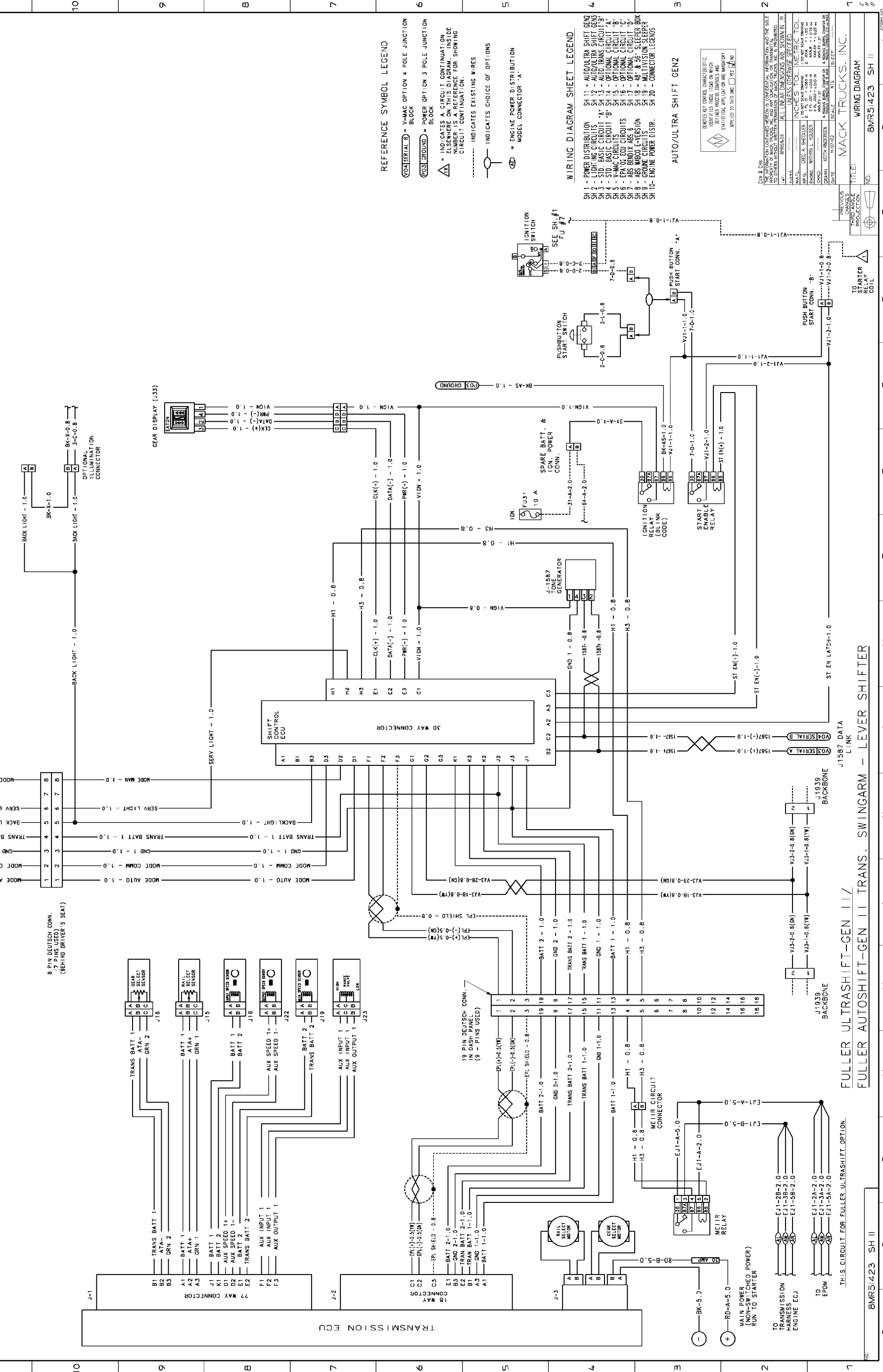
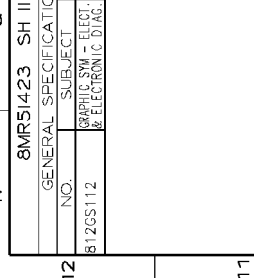
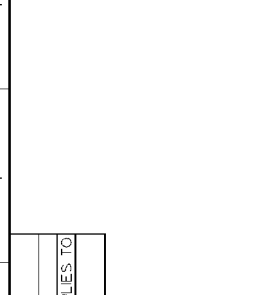
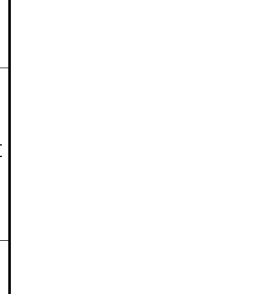
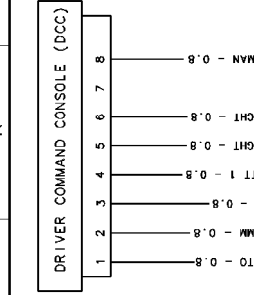
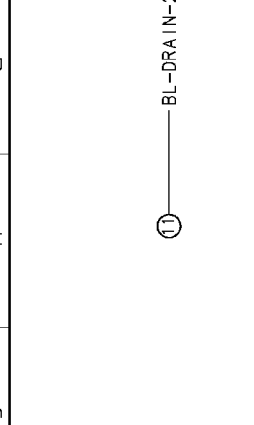
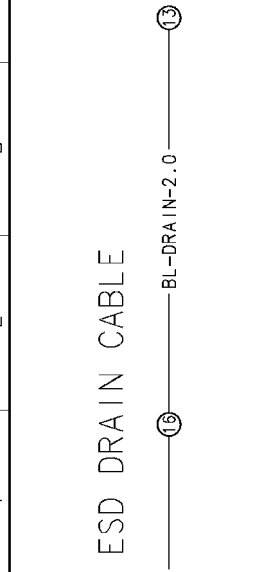


8MRS1423 SH II	
GENERAL SPECIFICATIONS	APPLIES TO
NO. SUBJECT	GRAPHIC SW - ELEC
8120S112	WIRING DIAG. ALL

8MRS1423 SH II	
CHANGES	DATE BY APPRO
A	P000143 CP000203/000000/000000
P3	ADD: FULLER ULTRASHIFT P0001366
C	BR OPTIONAL CIRCUIT P001560
D	Q1 EPDM SW. AL. W. & M. P0001366
F	Q4 TRANS. CO. P3 MAIN P0001366
B4	REVISED SHEET
C	B3 GEAR/SHIFT
	TRANS. CIRC. 'A'

8MRS1423 SH II	
CHANGES	DATE BY APPRO
A	P000143 CP000203/000000/000000
P3	ADD: FULLER ULTRASHIFT P0001366
C	BR OPTIONAL CIRCUIT P001560
D	Q1 EPDM SW. AL. W. & M. P0001366
F	Q4 TRANS. CO. P3 MAIN P0001366
B4	REVISED SHEET
C	B3 GEAR/SHIFT
	TRANS. CIRC. 'A'



**REFERENCE SYMBOL LEGEND**

- (with SERIAL B) = V-MAC OPTION 4 POLE JUNCTION BLOCK
- (with GROUND) = POWER OPTION 3 POLE JUNCTION BLOCK
- △ = INDICATES A CIRCUIT CONTINUATION ELSEWHERE ON THIS DIAGRAM. INSIDE NUMBER IS A REFERENCE FOR SHOWING CIRCUIT CONTINUATION.
- ..... = INDICATES EXISTING WIRES
- = INDICATES CHOICE OF OPTIONS
- ⊕ = ENGINE POWER DISTRIBUTION MODEL CONNECTOR 'A'

**WIRING DIAGRAM SHEET LEGEND**

- SH 1 - POWER DISTRIBUTION
- SH 2 - LIGHTING CIRCUITS
- SH 3 - ID. BASIC CIRCUIT 'A'
- SH 4 - V-MAC CIRCUITS
- SH 5 - EPA/02 ECU CIRCUITS
- SH 6 - ABS BRAKE ABS 6
- SH 7 - ABS BRAKE ABS 8
- SH 8 - ABS BRAKE ABS 8
- SH 9 - GROUND CIRCUITS
- SH 10 - ENGINE POWER DISTR.
- SH 11 - AUTO/ULTRA SHIFT GENZ
- SH 12 - AUTO/ULTRA SHIFT GENZ
- SH 13 - AUTO/ULTRA SHIFT GENZ
- SH 14 - V-MAC CIRCUITS
- SH 15 - V-MAC CIRCUITS
- SH 16 - V-MAC CIRCUITS
- SH 17 - V-MAC CIRCUITS
- SH 18 - V-MAC CIRCUITS
- SH 19 - V-MAC CIRCUITS
- SH 20 - V-MAC CIRCUITS

**TO TRANSMISSION HARNESS ENGINE ECU**

- EJ1-2B-2.0
- EJ1-3B-2.0
- EJ1-5B-2.0
- EJ1-2A-2.0
- EJ1-3A-2.0
- EJ1-5A-2.0

**TO EPDM**

- EJ1-2A-2.0
- EJ1-3A-2.0
- EJ1-5A-2.0

**THIS CIRCUIT FOR FULLER ULTRASHIFT OPTION.**